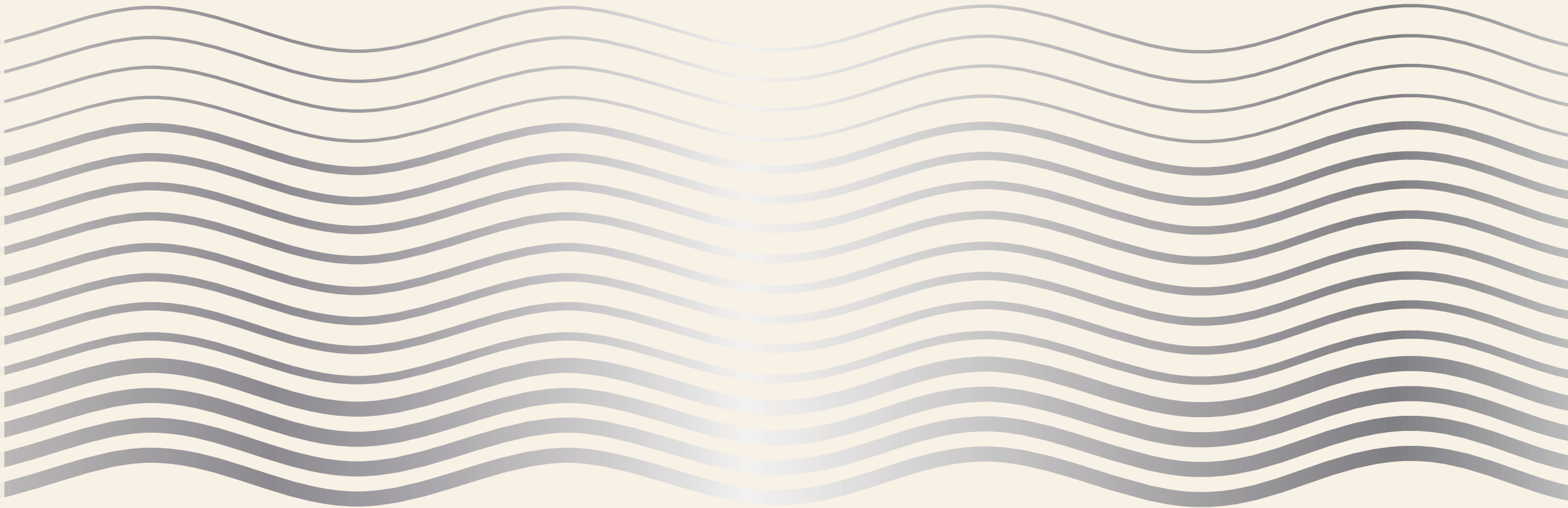


CRESCENT
PALI HILL

IT’S THOUGHTFUL. IT’S **Rustomjee®**

CALL: 022 6111 6111 | WWW.RUSTOMJEE.COM

Site Address: Rustomjee Crescent, Pali Hill road, Khar (W), Mumbai 400052.



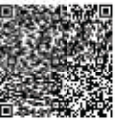
IT’S THOUGHTFUL. IT’S **Rustomjee®**

Disclaimer: This brochure does not constitute an offer and/or acceptance and/or contract and/or agreement and/or transaction and/or any intention thereof and/or a disclosure under any statute of any nature whatsoever. You are requested to independently, either directly or through your legal/financial consultants, thoroughly verify all details/documents pertaining to this project as available on www.maharera.mahaonline.gov.in under the name "Rustomjee Crescent", including but not limited to the approvals and permissions, proforma Agreement for Sale, which details the fixtures and fittings, common areas, facilities and amenities, title certificate and details of encumbrances and the manner in which the entire project is proposed to be developed. The layout plan, the orientation of buildings/towers/wings/structures, the common areas, facilities and amenities, the fixtures, fittings, soft furnishing/furniture, gadgets, technology, information, pictures, images and visuals, drawings, specifications, sketches and other details herein are merely creative imagination and an Architect's impression and are only indicative of the kind of development proposed in this project. These should not be construed in any manner as disclosures under the provisions of the Real Estate (Regulation and Development) Act, 2016 and the Rules made thereunder and/or applicable law, and the relevant applicable disclosures shall be made at an appropriate time. All dimensions mentioned in this brochure may vary/differ due to construction exigencies. Actual product may vary/differ from what is indicated herein. Further, dimensions mentioned on the floor plans are as per the plans approved by the concerned competent authority(ies) and the same are subject to construction exigencies. Minor variations (+/- 3%) in actual carpet areas may occur as a result of design/construction variances, finishing tolerance and column projections. The furniture/fixture etc., shown in the floor plan are only indicative and representative (not actual) in nature and are only for the purpose of illustrating/reflecting a possible layout and do not form part of the standard specification, amenities, services etc., to be provided in respect of the flat. The map shown in the brochure is a pictorial, indicative and selective representation of certain elements present/that may be present in and around Mumbai City/project site and is not a map. The Promoter/Developer makes no representations regarding existence/continuity of existence of any landmarks/locations shown on this location map. These landmarks/locations may be subject to change from time to time and such changes are completely outside the control of the Promoter/Developer. The photographs contained herein may be stock/standard photography taken at a location other than the project site and are used to indicate a conceptual lifestyle. No representation or warranty is made or intended as to the accuracy or completeness of information herein or as to its suitability or adequacy for any purpose. All transactions in respect of this project shall be subject to the terms and conditions of the Agreement for Sale to be entered into between the Promoter/Developer and the purchaser/s. By agreeing to purchase, you have represented that you are fully and completely satisfied on all aspects of this project including as mentioned above, and that all documents and information as required to be furnished to you under RERA and applicable law have been duly furnished. Mt. K Kapital is our equity partner for this project. The contents of this brochure shall at all times be subject to the provisions as contained in the aforesaid disclaimers.



MahaRERA Registration No. P51800080217. Listed on the
website: <http://maharera.mahaonline.gov.in/>

FOR RERA DETAILS
SCAN THIS



IT'S THOUGHTFUL. IT'S **Kustomjee®**

MAKING WAVES
IN PALI HILL:
ROOFTOP POOL
NIGHTS.



SHOT AT A RUSTOMJEE PROPERTY

“ For 29 years, we have taken pride in crafting a legacy of luxury landmarks that have defined the skyline of Mumbai. We have brought to life world-class amenities, like-minded communities, and unparalleled lifestyles - rooted in our design philosophy of blues and greens, in perfect harmony with nature.

At Rustomjee Crescent, we took this vision further, creating an exceptional 1.2-acre gated estate, the only one of its kind in Pali Hill. Here, every detail is designed for the extraordinary. From world-class amenities to a like-minded community, Rustomjee Crescent is a seamless blend of luxury and nature. Brought to life by the finest international minds, our landscape and architecture partners: SOG Design and COEN International.

And at its heart lies a true masterpiece: one of Mumbai’s longest rooftop pools. Conceived to be more than just an architectural feat, this immersive experience mirrors the city’s vibrant energy and elegant lifestyle. With an infinity-edge illusion, breathtaking panoramic views, and intelligent lighting that transforms from day to night, it’s a space where exhilaration meets serenity.

Whether you’re diving in for a swim or hosting the most talked-about soirée in town, here, life is your canvas.”

BOMAN R. IRANI

*Chairman &
Managing Director,
Rustomjee Group*



A woman with long brown hair tied back, wearing a blue athletic top and leggings, is running along a paved path in a lush garden. She is surrounded by dense green foliage, including large trees and bushes. The scene is bright and sunny, with sunlight filtering through the leaves. The overall mood is serene and active.

A 1.2-ACRE GATED
ESTATE: WHERE
SOPHISTICATION
MEETS SERENITY.

*Discover a one-of-a-kind
address.*

SHOT AT A RUSTOMJEE PROPERTY

CRESCENT

PALI HILL

DISCOVER YOUR
SANCTUARY
OF ENDLESS
POSSIBILITIES.

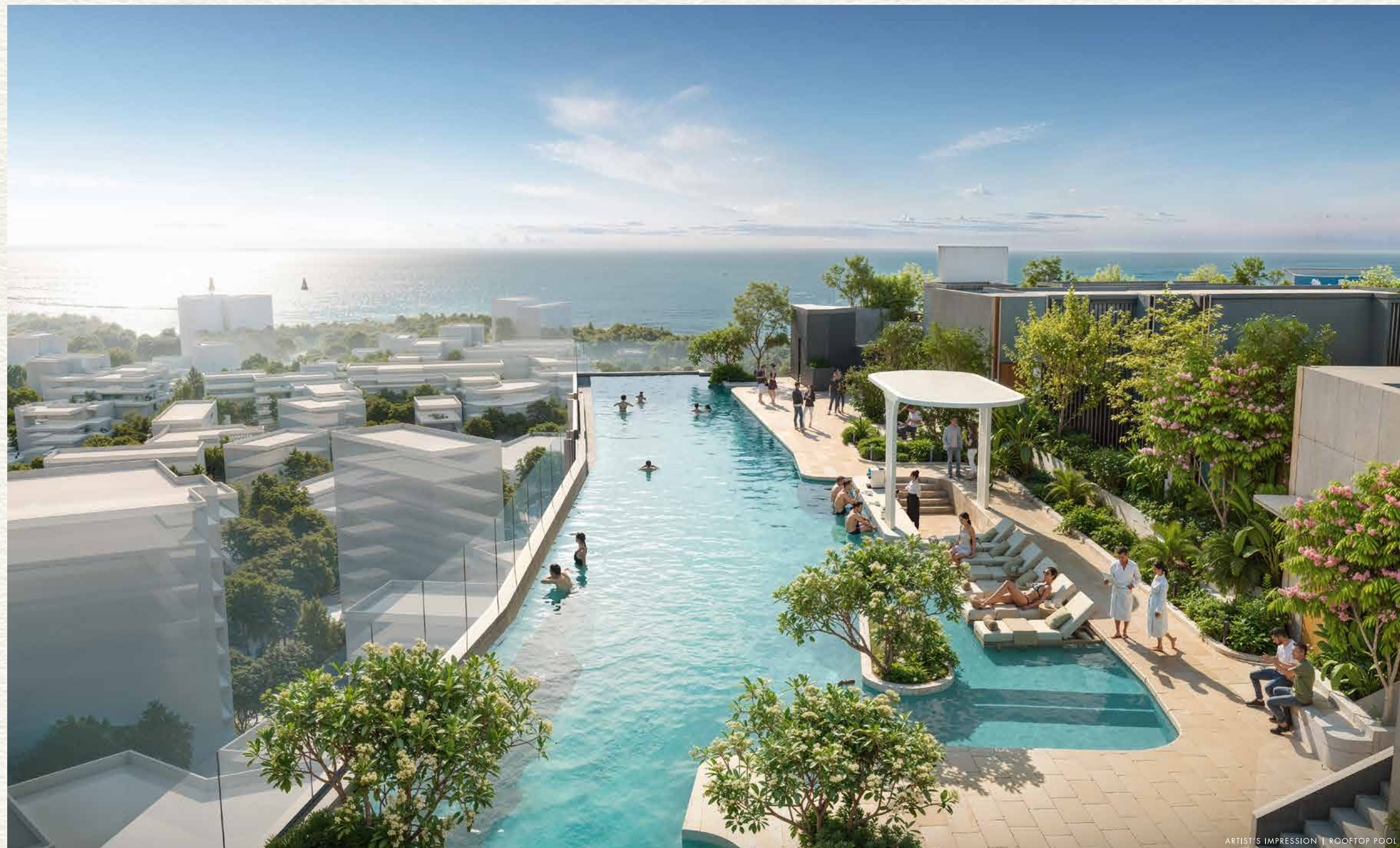
*Every day is an invitation to
reimagine. And every moment is
yours to redefine.*



ARTIST'S IMPRESSION

THE ART OF LIVING THE DREAM, PERFECTED TWICE IN PALI HILL.

Rustomjee's luxury landmarks, such as Parishram and The Panorama, are where timeless heritage meets contemporary grandeur. Situated in the illustrious enclave of Pali Hill, these exquisite residences have had an extremely positive response within months of their launches. And now the third chapter in Pali Hill is poised to redefine what it means to reside in one of Mumbai's most prestigious pincodes.



ARTIST'S IMPRESSION | ROOFTOP POOL



Welcome to your private sanctuary spread across 1.2 acres in the heart of Pali Hill. As a one-of-a-kind gated estate in the Bandra-Khar belt, Rustomjee Crescent redefines fine living with one of the longest rooftop pools in Pali Hill, pockets of greenery and a suite of thoughtfully curated amenities.

Nestled within the quiet lanes of the city's most iconic neighbourhood, you'll find every moment is an invitation to indulge. To bask in the neighbourhood's lively charm, turn neighbours into lifelong friends at soirees or rejuvenate in a blue oasis. Rustomjee Crescent transforms living into an extraordinary experience.

A PALI HILL ADDRESS
IS WORTH A
THOUSAND WORDS.
AND NOW, NEW LENGTHS
OF PRESTIGE.



A WELCOME
FIT FOR THE CITY'S
CHOSEN FEW.



EXPERIENCE THE ART OF LIVING WELL, ONE MOMENT AT A TIME.

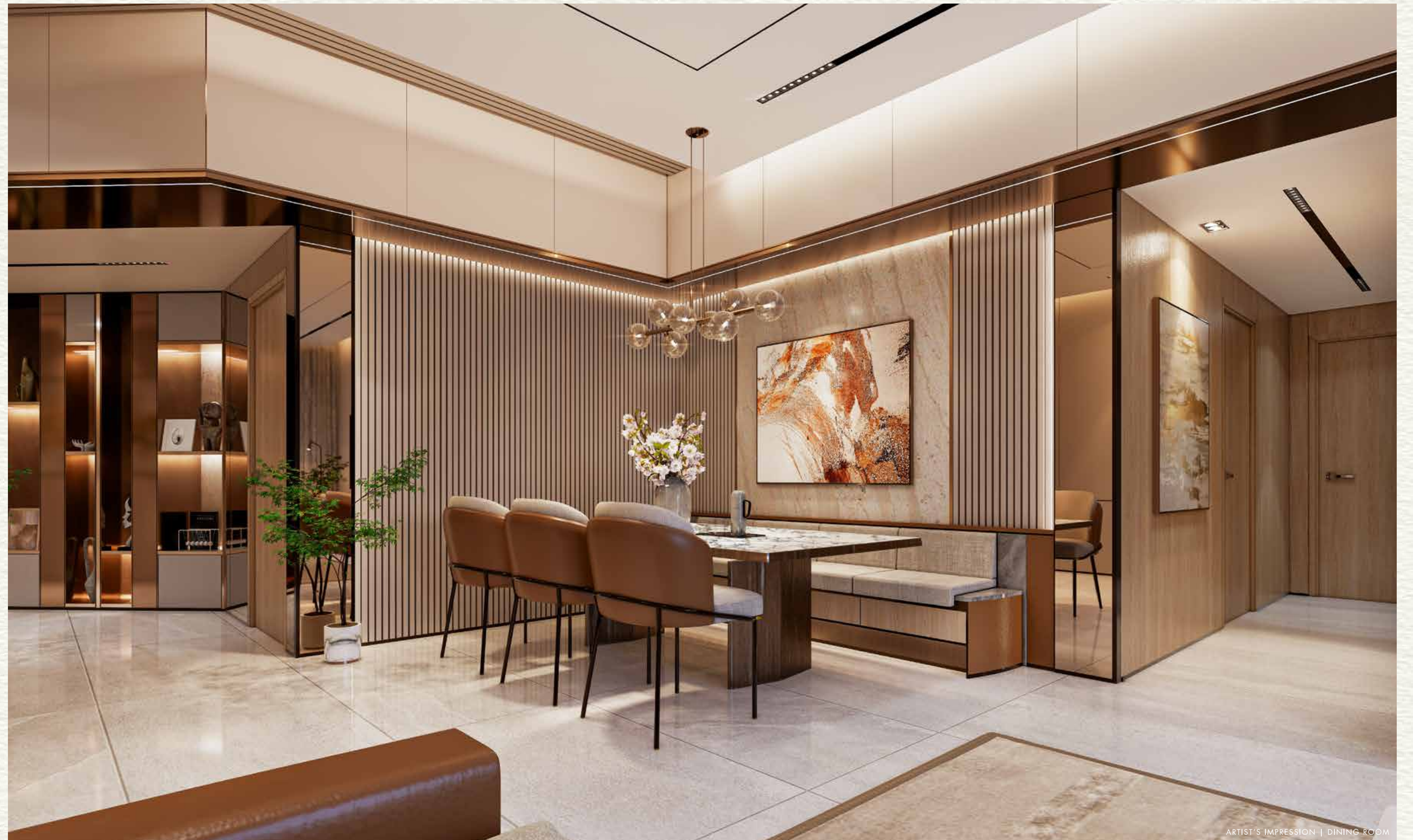
Gather in the warmth of a home where elegance unfolds effortlessly. Let the grandeur of space and the quiet grace of soaring ceilings set the stage for cherished family moments.

- SPACIOUS 3 AND 4 BEDROOM RESIDENCES
- DUPLEX PENTHOUSES
- OPTIMALLY DESIGNED BESPOKE LAYOUTS
- FULL-HEIGHT FRENCH WINDOWS
- AMPLE NATURAL LIGHT AND VENTILATION



SHOT AT A RUSTOMJEE PROPERTY

WHERE MENUS,
CONVERSATIONS AND
TIME TOGETHER
FIND A SEAT AT THE TABLE.



A COMFORT ZONE
YOU MAY NEVER
WANT TO
STEP OUT OF.



ARTIST'S IMPRESSION | LIVING ROOM

A PRIVATE
DOMAIN
OF STYLE
AND SERENITY.



ARTIST'S IMPRESSION | MASTER BEDROOM



SHOT AT A RUSTOMJEE PROPERTY

THE CITY'S BUZZ
ON ONE SIDE,
A BLISSFUL SEASCAPE
ON THE OTHER.

Step out onto a sundeck, get blown away by the magnificent views of the city and the sea. Let the greens and blues outside induce an unshakeable sense of tranquility and well-being.

- SPACIOUS SUNDECKS
- VIEWS OF THE CITY, AND THE SEA FROM HIGHER FLOORS



ARTIST'S IMPRESSION

THE SECRET INGREDIENTS TO ELEVATE THE EVERY DAY.

Rustomjee Crescent offers an unparalleled living experience with 24 thoughtfully curated amenities spread across two levels. The ground floor brings you closer to nature while the rooftop opens to the sky so you can enjoy the moon and stars. All in the company of like-minded neighbours who share your appreciation for finer living.



ARTIST'S IMPRESSION | SKY TERRACE

THE BEST INSPIRATION FOR HOBBIES: A GREAT VIEW AND NEW FRIENDS.

The rooftop offers a serene escape with open-air amenities spread over 15000 sq. ft., designed for relaxation and leisure. Every space invites residents to unwind under the sky, creating a perfect blend of nature, luxury, and comfort.

- AQUA DECK
- SKY POOL
- SKY YOGA DECK
- HEALTH CENTRE
- OUTDOOR THEATRE
- CHILL-OUT DECK
- VIEWING DECK



ARTIST'S IMPRESSION | OUTDOOR THEATRE

THE HORIZON BEGINS AT
THE WATER'S EDGE.

*Dive into a 50-metre long Sky Pool with breathtaking views
that blur the line between sea and sky. With a sprawling
pool deck, every swim feels like an escape.*



DISCOVER NATURE IN THE CITY AND FRIENDS AMONGST NEIGHBOURS.

The ground floor is thoughtfully designed to bring people together. A harmonious mix of relaxation, activity, and connection, offering something for everyone.

- SOCIAL LAWN
- FITNESS CENTRE
- BANQUET HALL
- PLAYGROUND
- SWING GARDEN
- VEHICLE-FREE KIDS' PLAY AREA

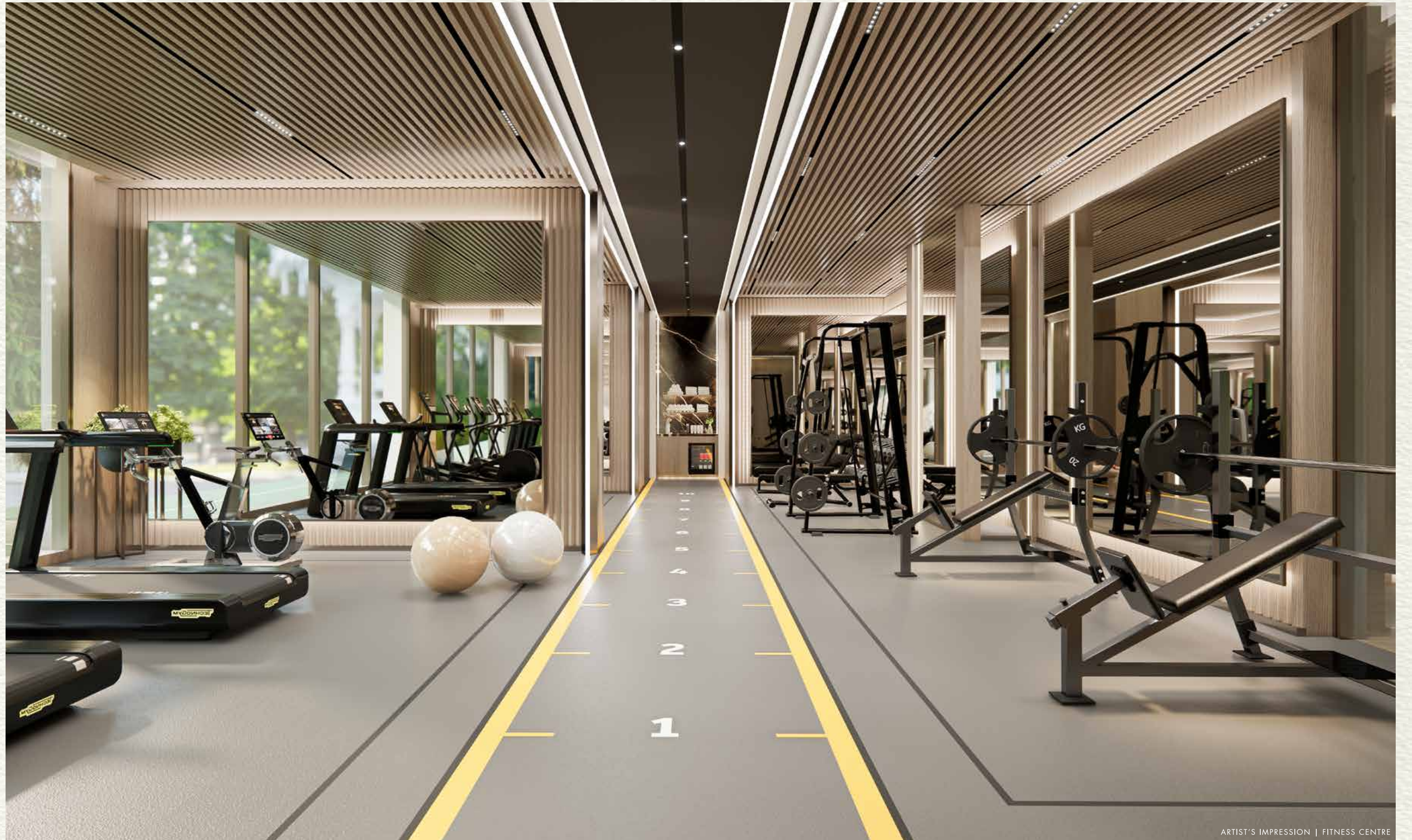


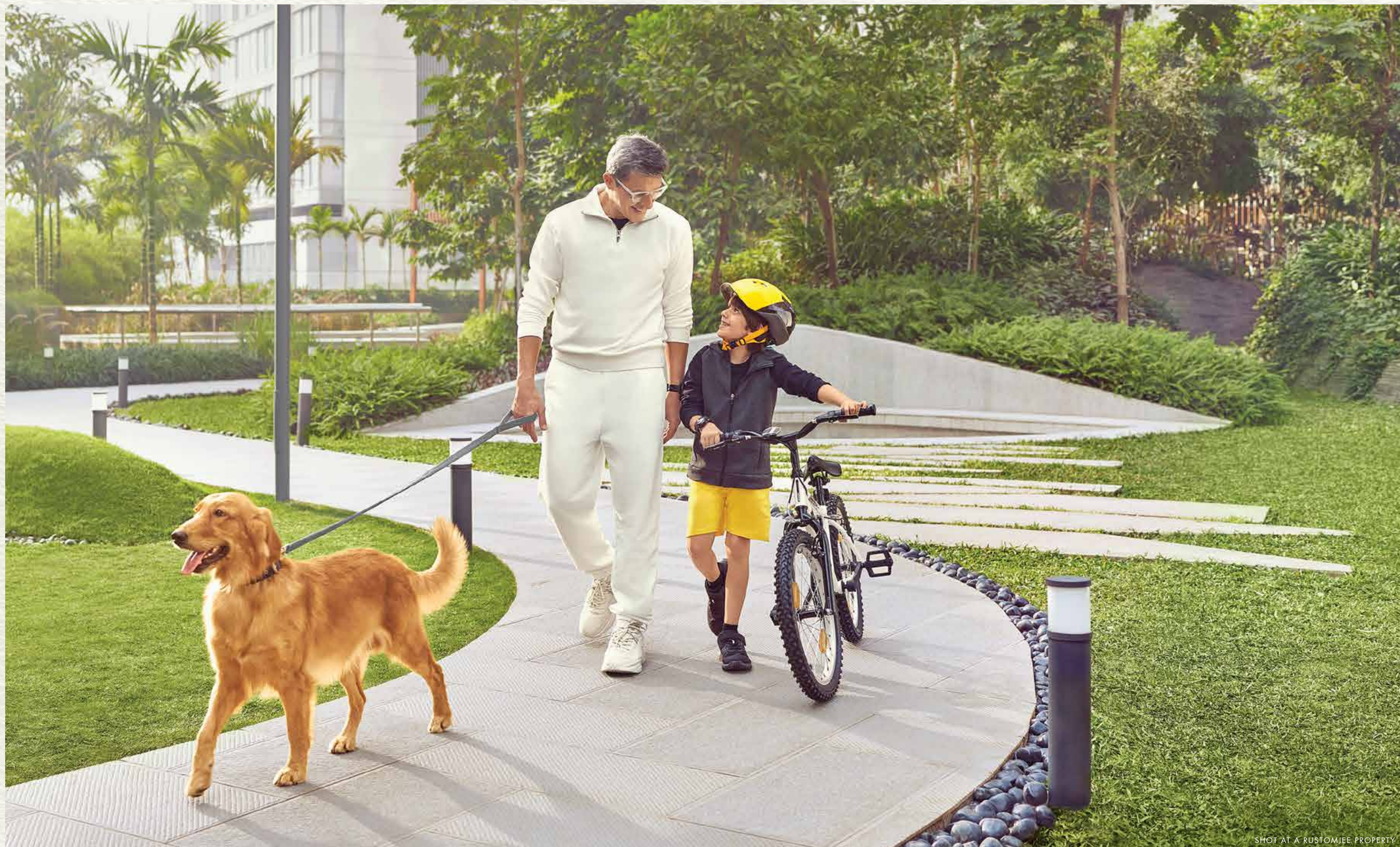
SHOT AT A RUSTOMJEE PROPERTY

WHERE KIDS
CREATE UNIVERSES
AND A LIFE
WITHOUT LIMITS.



ALL THE
MOTIVATION
YOU NEED
FOR 6 A.M
WORKOUTS.





**WHERE YOU'LL
DISCOVER
THAT HEAVENLY
HOMES REACH
FOR THE SKY.**

At Rustomjee Crescent, we've reimagined what it means to live luxuriously by blending celestial inspiration with grounded practicality. Drawing from the beauty of the moon, the landscape feels like a dreamy escape into nature's embrace.

The green spaces here aren't just patches of foliage; they're immersive sanctuaries. Expansive canopies create a serene retreat. Every plant and tree is placed with precision, creating a layered jungle-like effect that's kissed with a gentle mist, evoking the soft, hazy allure of drifting clouds.

The pathways trace gentle curves, connecting seamlessly to thoughtfully integrated amenities. It's a home that brings you closer to the clouds, both in design and experience.

SHOT AT A RUSTOMJEE PROPERTY



CREATING AN ADDRESS THAT'S
A WORLD APART,
REQUIRES COLLABORATING WITH
WORLD-CLASS VISIONARIES.

LANDSCAPE CONSULTANT:
COEN INTERNATIONAL

A Singapore-based, landscaping company that has over 15 years of experience and countless award-winning landscape projects under its belt. Their unique design language connects indoor and outdoor spaces seamlessly, bringing out the essence of each location they work on. Led by design mastermind Ms. Ann Teo, whose vision has contributed to shaping the skyline of several Asian nations, including Singapore's marquee projects such as Sky Habitat, DUO, and V on Shenton.

CONSULTING DESIGN
ARCHITECT: SOG DESIGN

SOG Design is a renowned architecture and design firm based in Singapore, focused on creating sustainable, innovative solutions. They are committed to transforming environments with thoughtful, purpose-driven designs. Helmed by Design Director Guido Bigolin - a talented architect, master planner, and interior designer known for his innovative approach to design. His signature projects span across Europe and Southeast Asia.



A LANDMARK THAT
SETS NEW STANDARDS,
BUILT BY MINDS THAT
REDEFINE THE NORM.

DESIGN CONSULTANTS:
VIVEK BHOLE ARCHITECTS
PVT. LTD.

One of the leading architectural firms in Mumbai, they transform the needs and aspirations of clients into inventive, engaging environments. The residences created often honour the unique qualities of its purpose and place, and are environmentally responsible.

STRUCTURAL CONSULTANTS:
DR. H.M.RAJE STRUCTURAL
CONSULTANT PVT. LTD.

Raje Consultants is a leading provider of engineering consultancy, with over two decades of Experience. It is known for its expertise in diverse sectors such as real estate, infrastructure, and healthcare.

MEPF CONSULTANT:
CLANCY GLOBAL

Clancy Global, a premier Mechanical, Electrical, Plumbing, and Fire consulting firm, offers integrated solutions focused on sustainability and energy efficiency, and ensures that each design not only meets but exceeds modern standards.

TRAFFIC CONSULTANT:
TRANSPORTATION & TRAFFIC
ENGINEERING CONSULTANTS

TTEC is a leading consultancy specializing in traffic studies, parking demand analysis, and traffic management plans, primarily for real estate development projects with over a decade of experience.



ARTIST'S IMPRESSION

AT THE CORE
OF OUR
BLUEPRINT:
GREEN
THINKING.

Our commitment to thoughtful sustainability is reflected in every detail of our design and every part of our floor plan. Every design decision, from the materials used to the services provided, is made with a focus on minimizing environmental impact while maximizing comfort and quality of life.

Here are just a few thoughtful features that create a space to prioritize both luxury and the environment:



Organic waste composting

An on-site composting system to efficiently treat biodegradable waste.



Water-saving fixtures

Low-flow taps and fixtures designed to minimize fresh water usage without compromising comfort.



Energy-efficient lighting and equipment

LED lights and high-efficiency pumps in common areas to cut down on energy use and operational costs.



Double-glazed, full-height windows

These windows optimize natural light by blocking harmful UV rays and heat, ensuring an ideal quality of light without compromising on energy efficiency.



Green roof

A landscaped roof absorbs sunlight, and enhances overall sustainability.



Solar panels

Harnessing solar energy to power lighting in common areas, reduces reliance on conventional sources.



Rainwater harvesting

A dedicated tank to collect and store rainwater, promoting water conservation and self-sufficiency.



Eco-friendly services

VOC paints, rainwater harvesting, sewage treatment plants and organic waste converters are a few services we provide to support sustainable living.



EV charging points

Enable sustainable transportation by supporting electric vehicles with efficient charging solutions.

THE HEART OF ELEGANCE, THE SOUL OF HERITAGE.

Amidst lush green canopies and winding lanes, Rustomjee Crescent rises as a tribute to the timeless charm of Pali Hill. History lingers in the Art Deco facades, quaint churches, and charming bungalows while Pali Hill buzzes with gourmet restaurants and lively cafés.

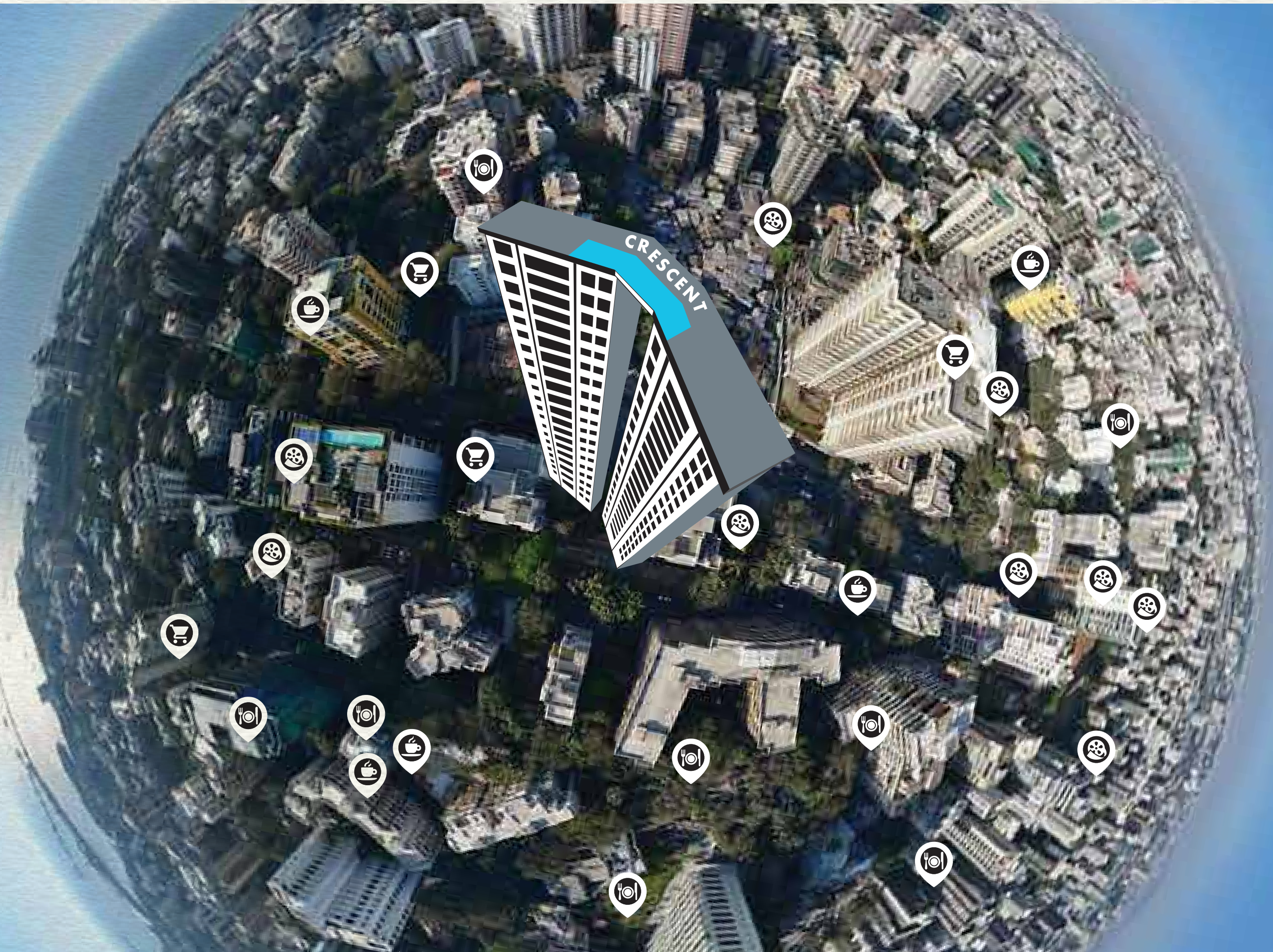
It's where the vibrant red of Gulmohar trees meets the serene blue of the distant sea.

Once a quiet suburb, Pali Hill has grown into Mumbai's beating cultural heart. Here walls come alive with street art, and the air hums with the spirit of a quiet sophistication.



SHOT AT A RUSTOMJEE PROPERTY

IN THE NEIGHBOURHOOD:
GASTRONOMICAL
ADVENTURES, CULTURAL
EXPLORATIONS
AND UNFORGETTABLE
EXPERIENCES.



KEY LANDMARKS:

BKC: 10.2 KM.
SUBURBS: 11.5 KM.
SOUTH BOMBAY: 16 KM.
AIRPORT: 12 KM.

CONNECTIVITY:

BANDRA-WORLI SEA LINK: 13.1 KM.
WESTERN EXPRESS HIGHWAY: 19.6 KM.

UPCOMING INFRASTRUCTURE NEARBY:
COASTAL ROAD: 14.5 KM



HAPPINESS,
COMMUNITIES AND
LIFELONG FRIENDSHIPS.
JUST A FEW THINGS
WE'VE BUILT IN OUR
29-YEAR-OLD LEGACY.

Since 1996, Rustomjee has transformed millions of square feet of the city into premium townships, luxury gated estates, corporate parks, retail spaces, standalone landmarks and affordable homes. Built into our blueprints are ideas for a happier, healthier, more connected world.



SHOT AT A RUSTOMJEE PROPERTY

LET YOUR ENTRÉE
TO LIFE IN PALI HILL
BE A TRULY
DISTINCTIVE ONE.